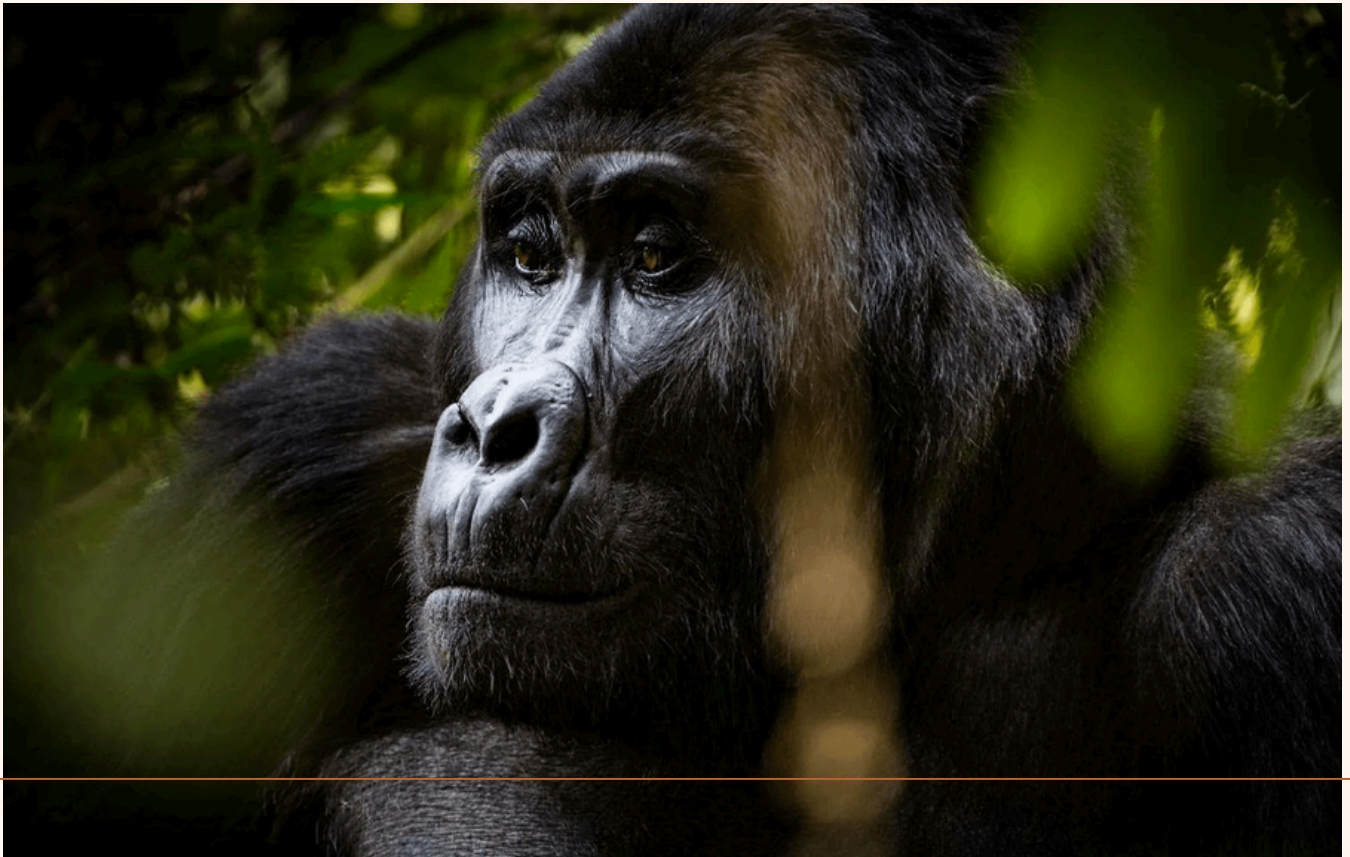


06 DAYS: ULTIMATE SCENIC SAFARI AND PRIMATE TREK

06 Days | 05 Nights

This Rwanda–Uganda adventure offers an extraordinary journey through lush landscapes, vibrant culture, and remarkable wildlife. Begin with an engaging city experience in Kigali before trekking the scenic Mount Bisoke volcano in the Virunga range to its breathtaking Crater Lake. Venture into Bwindi Impenetrable Forest for an unforgettable gorilla tracking encounter, discover the playful golden monkeys in Mgahinga's bamboo forests, and unwind on a serene boat cruise across the stunning Lake Mutanda.

Group Size: 06 – 12 Guests



Kampala – Jinja – Murchison Falls National Park – Kibale National Park – Entebbe

Package Price: Quoted in US Dollars Based on Single Occupancy

| Number of Guests | Midrange Option | Luxury Option |
|------------------|-----------------|---------------|
| 2 | 4,075 pp. | 6,565 pp. |

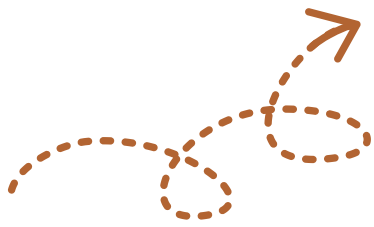
TOUR HIGHLIGHTS

- Bwindi Gorilla tracking
- Mgahinga Golden Monkey trek
- Bird Watching on treks
- Batwa cultural trail (Optional)
- Breath-taking scenic views
- Guided nature walks
- Mount Bisoke Hike
- Kigali City Tour
- Lake Mutanda exploration

INCLUSIONS

- Meals as described in the itinerary.
- Transport in an enclosed 4WD Landcruiser.
- Fuel cost for the entire trip.
- 02L daily mineral water on safari per person
- 05 Nights' accommodation
- Gorilla and Golden monkey permit pp – Uganda
- Planned activities plus Bisoke climb fees.
- An English-speaking driver guide.
- AMREF Medical evacuation cover

Excluded: All optional activities and services not mentioned above.



YOUR Itinerary

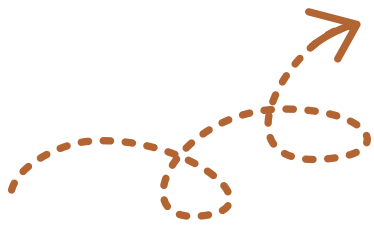
DAY 1 – Arrival in Kigali and transfer to the Hotel

Journey time: Less 30 Minutes

Upon arrival at Kigali Int. Airport, you will be welcomed by your safari guide, who will assist with your luggage and escort you on a comfortable transfer to your hotel in Kigali.

Overnight: Midrange: Kigali Serena Hotel – or similar
Luxury: The Retreat by Heaven – or similar
Meal Plan: Bed and Breakfast





YOUR Itinerary

DAY 2 –Kigali City Tour and Travel to Volcanoes National Park

Journey Time: Approx. 3 Hours

Pick-up time: 08:30AM.

After breakfast and check-out, embark on a guided tour of Kigali City, with lunch arranged at a restaurant along the way.

Start by exploring the highlights of Kigali City: This Kigali excursion offers the perfect introduction to Rwanda's vibrant capital. Known for its rolling hills, moderate year-round climate, and reputation as one of Africa's cleanest and safest cities, Kigali is a delight to explore. Highlights of the city tour include visits to Kandt House, the Natural History Museum, and the Presidential Palace Museum. You will also enjoy panoramic views from Mount Kigali and make a meaningful stop at Kigali Genocide Memorial.

Optional Activity (30\$ per person): Iby'Iwacu Cultural Experience – A visit to Iby'Iwacu Cultural Village offers an authentic insight into Rwanda's heritage and traditions. Engage with the locals through guided walks, explore a replica of the King's house, and enjoy traditional performances featuring Intore dance and cultural songs. You will also listen to folktales and observe the local process of brewing banana beer and spirits. Later in the evening, proceed to the lodge to refresh and enjoy dinner.

Overnight: Midrange: Ingagi Parkview Lodge – or similar

Luxury: The Bishop's House Rwanda – or similar

Meal Plan: Full Board



YOUR Itinerary

DAY 3- Mount Bisoke Summit Adventure and Transfer to Bwindi Forest

Journey Time: Approx. 03 Hours

Pickup Time: 06:00AM.

Enjoy an early breakfast at the lodge before transferring to the park's Kinigi Office for registration and a detailed pre-climb briefing. A packed lunch is provided to keep you energized throughout the adventure.

Planned Activity: Mount Bisoke Summit Adventure – Arrive at Kinigi Office by 07:00AM for briefing and guide allocation before setting off on an exhilarating trek. Rising to 3,711m ASL, Mount Bisoke is among the most rewarding and scenic volcanoes of the Virunga range. The trail takes you through lush vegetation, offering sweeping views of the surrounding mountains, before culminating at the breathtaking Crater Lake at its summit. The full adventure typically lasts around six hours—approx. four hours to the top and two hours descending.

After the hike, transfer to Bwindi Impenetrable Forest, where dinner awaits at your lodge.

Overnight: Midrange: Four Gorillas Lodge – or similar

Luxury: Nkuringo Gorilla Lodge – or similar

Meal Plan: Half Board

YOUR Itinerary

DAY 4 – Gorilla Tracking Expedition with the Evening at Leisure

Pickup Time: 06:30AM.

After an early breakfast, you will receive a lunchbox and bottled water to carry in your backpack, after which you will proceed to the park office.

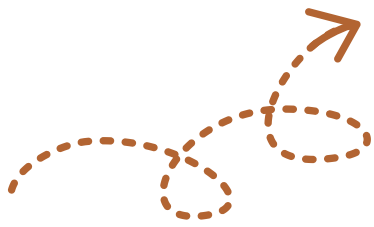
Planned activity: Bwindi Gorilla Tracking Experience – Venture deep into the heart of Bwindi Impenetrable Forest for an unforgettable encounter with the endangered mountain gorillas. Accompanied by an experienced ranger and skilled trackers, you will navigate lush, mist-shrouded trails, surrounded by the sounds and scents of the jungle, as anticipation builds with every step. Upon finding the gorillas, spend 1 to 2 magical hours observing and photographing these majestic creatures in their natural habitat. This is more than a trek—it is an intimate, once-in-a-lifetime adventure into one of the world's most extraordinary ecosystems! During the trek, your guide will select a serene spot for a picnic lunch before you continue or return to the lodge (subject to change). For your comfort and safety, wear sturdy hiking shoes, long trousers, long-sleeved shirts, gloves, a face mask, and carry insect repellent and water.

Afterwards return to the lodge for leisure, plus dinner inclusive.

Overnight: Midrange: Four Gorillas Lodge – or similar

Luxury: Nkuringo Gorilla Lodge – or similar

Meal Plan: Full Board



YOUR Itinerary

DAY 5 – Golden Monkey Trek and Explore Lake Mutanda, Return to Kigali

Journey time: Approx. 3 Hours to Kigali

Pickup Time: 06:00AM.

Early breakfast at the lodge and check-out. Thereafter travel to Mgahinga Gorilla National Park for the golden monkey trek.

Planned Activities: Mgahinga Golden Monkey Trek – After a morning briefing, set out at 08:00AM for your trek into Mgahinga's lush rainforest. Golden monkeys are found in the lower bamboo zones, along the way, immerse yourself in the forest's unique ecosystem while tracking these playful and endangered primates, observing them as they leap gracefully through the bamboo – the experience typically lasts 1–2 hours. For comfort and safety, it is recommended to wear sturdy hiking shoes, long-sleeved clothing, and trousers, and to carry essentials such as insect repellent, drinking water, a face mask, and a walking stick. Porters are available to assist if needed. And Lake Mutanda Boat Cruise – Later, transfer to Cheba's Point for a serene two-hour boat cruise on the scenic Lake Mutanda. Glide across its shimmering waters, explore some of its picturesque islands, and take in the stunning backdrop of surrounding hills and distant volcanoes.

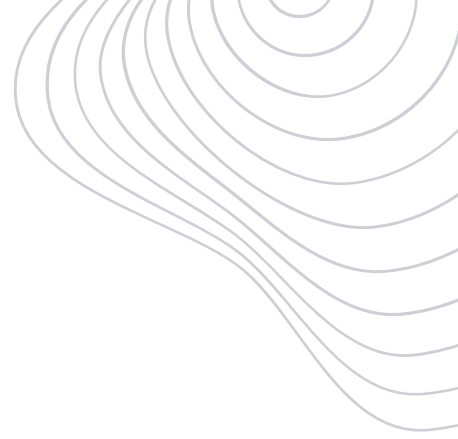
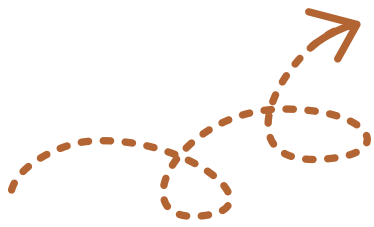
Thereafter, meet your guide and proceed to Chameleon Hill Lodge for lunch. Afterward, continue to Kigali City for hotel check-in, dinner this evening will be at your own expense.

Overnight: Midrange: Kigali Serena Hotel – or similar

Luxury: The Retreat by Heaven – or similar

Meal Plan: Bed and Breakfast





YOUR Itinerary

DAY 6 –Concluding your Trip: Transfer to Kigali Airport

Journey time: Less 1 Hour



Pickup Time: Flexible, with hotel check-out at 10:00AM. Enjoy a leisurely morning to relax and savor your final hours in Kigali. When ready, a private transfer will take you to Kigali Int. Airport in time for check-in and your onward departure.

Meal Plan: Breakfast Only

End of Safari

