

03 DAYS: UGANDA GORILLA SAFARI FLY-IN

03 Days | 02 Nights

Experience the thrill of tracking endangered mountain gorillas in the heart of Bwindi Impenetrable Forest. Begin with a scenic flight from Entebbe and a relaxing evening, with optional cultural experiences like the Batwa Trail. The highlight is an unforgettable gorilla trek through the lush forest trails, spending 1–2 hours observing these majestic creatures. Conclude with a return flight to Entebbe or extend your primate adventure with optional excursions such as the Mabamba Shoebill Tour.

Group Size: 06 – 12 Guests



Entebbe – Bwindi Impenetrable Forest – Entebbe

Package Price: Quoted in US Dollars Based on Single Occupancy

Number of Guests	Midrange Option	Luxury Option
2	3,058 pp.	4,428 pp.

TOUR HIGHLIGHTS

- Gorilla tracking experience.
- Bird Watching on trek.
- Batwa cultural trail – optional
- Breath-taking aerial views
- Guided community walks
- Cultural visits and interactions
- Souvenir shopping

INCLUSIONS

- Gorilla tracking permit (per person)
- Transportation in a 4WD Land Cruiser
- Return domestic airline ticket.
- Return transfers between airstrip and lodge in Bwindi.
- 02 Nights' accommodation
- Meals as specified in the itinerary.
- AMREF medical evacuation coverage
- Services of an English-speaking guide

Excluded: All optional activities and services not mentioned above.

YOUR Itinerary

DAY 1 – Arrival in Entebbe and Fly to Bwindi Impenetrable Forest

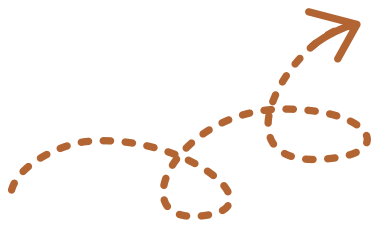
Flight Duration: Approx. 2 Hours

Upon arrival at Entebbe Airport, you will proceed to check in for your domestic flight to Bwindi Impenetrable Forest. Upon landing at Kihikihi or Kisoro, our safari guide will warmly receive you for a ground transfer to the lodge, where you will check in for lunch and enjoy the rest of the day at leisure. Optional Activity (@30\$ pp.): Batwa Cultural Trail.

Overnight: Midrange: Four Gorillas Lodge – or similar

Luxury: Nkuringo Gorilla Lodge – or similar

Meal Plan: Full Board



YOUR Itinerary

DAY 2 –Gorilla Tracking Experience with a Relaxed Evening!

Pickup Time: 06:30AM.

After an early breakfast, you will receive a lunchbox and bottled water to carry in your backpack, after which you will proceed to the park office.

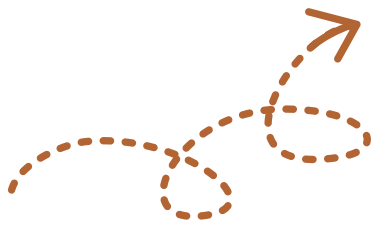
Planned activity: Bwindi Gorilla Tracking Experience – Venture deep into the heart of Bwindi Impenetrable Forest for an unforgettable encounter with the endangered mountain gorillas. Accompanied by an experienced ranger and skilled trackers, you will navigate lush, mist-shrouded trails, surrounded by the sounds and scents of the jungle, as anticipation builds with every step. Upon finding the gorillas, spend 1 to 2 magical hours observing and photographing these majestic creatures in their natural habitat. This is more than a trek—it is an intimate, once-in-a-lifetime adventure into one of the world's most extraordinary ecosystems! During the trek, your guide will select a serene spot for a picnic lunch before you continue or return to the lodge (subject to change). For your comfort and safety, wear sturdy hiking shoes, long trousers, long-sleeved shirts, gloves, a face mask, and carry insect repellent and water. After the trek, return to the lodge for leisure.

Overnight: Midrange: Four Gorillas Lodge – or similar

Luxury: Nkuringo Gorilla Lodge – or similar

Meal Plan: Full Board





YOUR Itinerary

DAY 3- Transfer to the Airstrip for Flight back to Entebbe Airport

Flight Duration: Approx. 2 Hours



After an early breakfast, check out and be transferred to the airstrip for your flight back to Entebbe, where you will proceed to check in for your onward flight. For later departures, a dayroom, transfers, with an optional excursion can be arranged at a cost.

Optional Activity: Mabamba Shoebill Tour.

Meal Plan: Breakfast only

End of Safari

