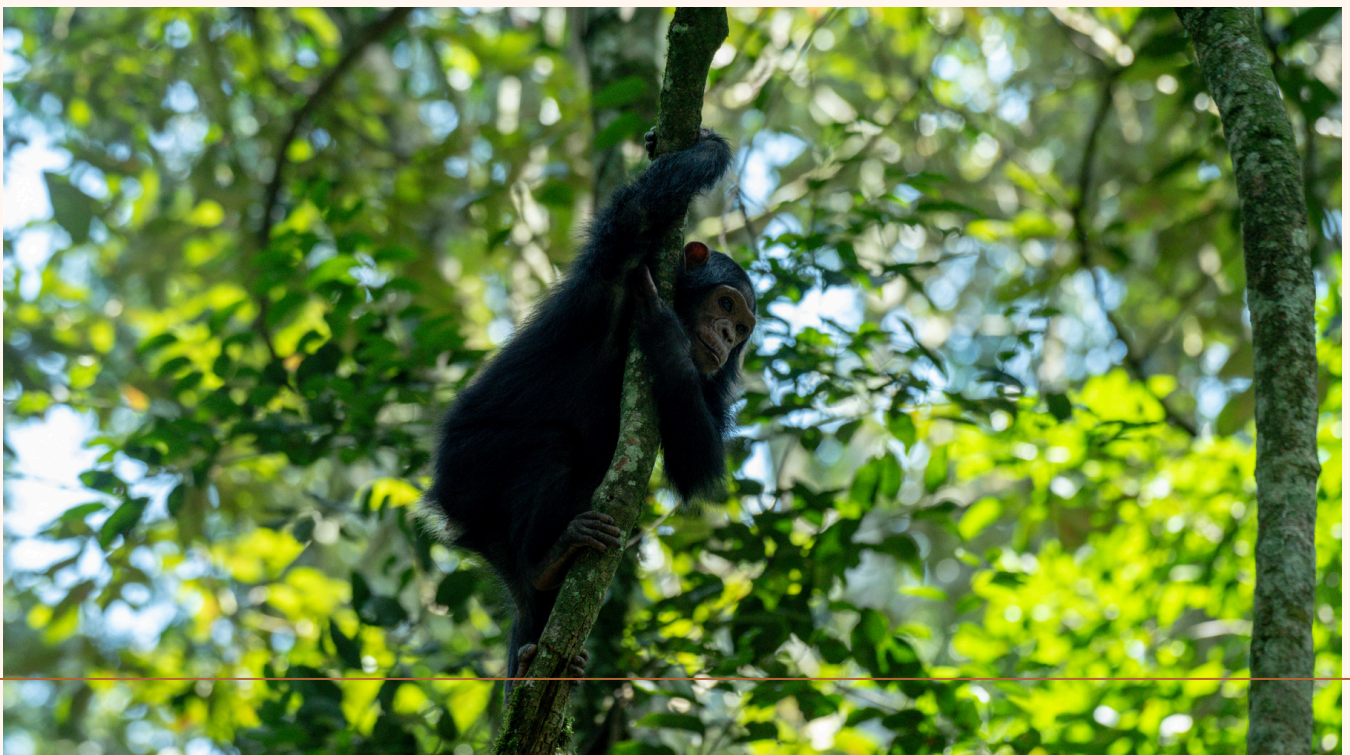


UGANDA PRIMATE EXPEDITION & CULTURAL IMMERSION

07 Days/06 Nights

This Uganda and Rwanda incentive journey combines thrilling wildlife encounters, immersive cultural experiences, and inspiring reflection. Highlights include an exhilarating chimpanzee trek in Kibale Forest, an exclusive gorilla tracking adventure in Bwindi Impenetrable National Park, a playful Golden Monkey trek in Mgahinga, and hands-on rural experiences at Lake Mutanda. The journey concludes with a visit to Kigali Genocide Memorial. With expert guides, well curated adventures, and comfortable lodges, this expedition offers a dynamic, unforgettable, and truly rewarding incentive experience.

Group Size: 06 – 12 Guests



Entry EBB – Kibale Forest National Park – Bwindi Impenetrable Forest via Lake Mutanda –
Mgahinga Gorilla National Park – Exit Kigali

Package Price: Quoted in US Dollars Based
on Single Occupancy

Number of Guests	Group Sharing Min. 6 Pax	Group Sharing Min. 12 Pax
06 and 12	7,365 pp.	7,150 pp.

Single Room Supplement: 450 USD per night

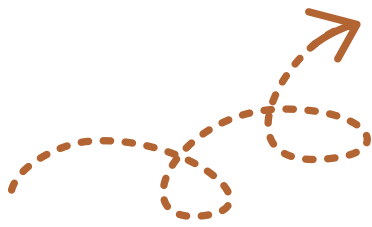
TOUR HIGHLIGHTS

- Chimpanzee trekking experience
- Bwindi Gorilla tracking adventure
- Mgahinga Golden Monkey trek
- Lake Mutanda Cultural immersion
- Visit Kigali Genocide Memorial
- Scenic domestic flight
- Stunning scenery and birding

INCLUSIONS

- All primate tracking permits as mentioned.
- 5 Nights' accommodation as described.
- One-way domestic flight ticket per person
- All planned meals as per itinerary.
- Transport in an enclosed 4WD Land Cruiser with popup roof.
- Return airport transfers included.
- Fuel for the entire trip until departure.
- 02L bottled mineral water per person daily.
- All park entry fees for parks visited.
- A professional English-speaking driver guide
- AMREF medical evacuation cover

Excluded: All optional activities and services not mentioned above.



YOUR Itinerary

DAY 1 – Arrival at Entebbe: Private transfer to the Hotel within Entebbe



Upon arrival at Entebbe Int. Airport, you will be warmly welcomed by our dedicated safari guide(s) and transfer to your hotel – a smooth check-in and lunch will set the tone for your rewarding journey. Take the rest of the day to relax, unwind, and enjoy the hotel's comforts at leisure as you prepare for the unforgettable adventures that lie ahead.

Overnight: Entebbe Forest Lodge – or similar

Meal Plan: Full Board (Lunch, Dinner, and Breakfast)



YOUR Itinerary

DAY 2 –Flight to Kasese: Afternoon Chimpanzee Tracking in Kibale Forest

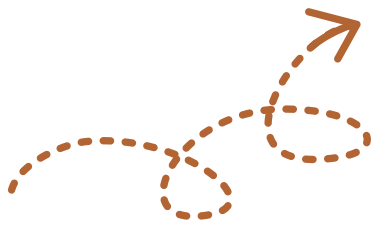
Flight Duration: Approx. 2 Hours

Pickup is scheduled for 06:00AM or 09:00AM.

After an early breakfast at your hotel, you will be transferred to Entebbe Airport for your scenic domestic flight to Kasese Airstrip. On arrival, our dedicated safari guide(s) will warmly welcome you and accompany you on a 1–2–hour drive to Kibale Forest. Upon reaching your lodge, enjoy a delightful lunch and some time to refresh before setting out on an unforgettable chimpanzee trek.

Afternoon Activity: Chimpanzee Tracking in Kibale Forest – After a delightful lunch at your lodge, set out for an extraordinary afternoon adventure into the pristine rainforest of Kibale. At 02:30PM, following a personalized briefing, you will be guided by expert rangers on an exclusive trek through towering trees and lush undergrowth in search of our closest relatives in the wild. Listen for the exhilarating calls of chimpanzees echoing through the canopy, and witness these remarkable primates as they forage, play, and interact within their natural habitat. Along the way, enjoy the privilege of encountering other rare wildlife while immersing yourself in one of Africa's most celebrated ecosystems. This once-in-a-lifetime experience is both a reward and a celebration—an intimate connection with nature at its most captivating. Be sure to bring sturdy hiking boots, long trousers, a face mask, insect repellent, gloves, and mineral water for your adventure trek. Conclude the day with a sumptuous dinner, followed by a tranquil overnight stay at your lodge—an ideal retreat to relax, rejuvenate, and savor the rewards of your journey.

Overnight: Tabebuia Spa & Safari Resort – or similar
Meal Plan: Full Board (Lunch, Dinner, and Breakfast)



YOUR Itinerary

DAY 3 – Scenic Journey to Bwindi Impenetrable National Park

Journey time: Approx. 06 Hours

Pickup Time: 06:30AM.



After a hearty breakfast at the lodge, check out and set off on a scenic journey from Kibale Forest to the iconic Bwindi Impenetrable Forest—home to the endangered mountain gorillas! Arriving in the afternoon, you will be welcomed to your lodge with a refreshing lunch and the remainder of the day at leisure to relax and soak in the tranquil beauty of this extraordinary destination.

Overnight: Nkuringo Gorilla Lodge – or similar

Meal Plan: Full Board (Lunch, Dinner, and Breakfast)



YOUR Itinerary

DAY 4 –Gorilla Trekking Adventure and an Evening of Relaxation

Pickup Time: 06:30AM.

Start the day with an early breakfast, then receive a carefully prepared lunchbox with mineral water to carry for your primate adventure.

The day's main Activity: Bwindi Gorilla Tracking Experience

After completing park formalities, embark on a once-in-a-lifetime journey into the heart of Bwindi Impenetrable National Park in search of the endangered mountain gorillas. With your expert ranger guide, enjoy an intimate encounter with these remarkable primates, spending 1–2 hours observing, photographing, and connecting with them in their pristine natural habitat. This extraordinary adventure is a privileged and deeply rewarding experience, offering memories that will linger long after the journey ends—a true celebration of achievement and the wonders of nature. Midway, savor a picnic lunch set in a scenic, tranquil spot handpicked by your guide. Depending on conditions, continue your trek or return to the lodge to unwind. For safety, we recommend sturdy hiking shoes, trousers and long sleeves, gloves, a face mask, insect repellent, and ample drinking water.

After an extraordinary experience, return to your lodge for a specially arranged dinner—an ideal way to relax and celebrate the day's accomplishments!

Overnight: Nkuringo Gorilla Lodge – or similar

Meal Plan: Full Board (Breakfast, Lunch, and Dinner)

YOUR Itinerary

DAY 5 –Lake Mutanda: Experience “A Day in Rural Uganda” (Day trip)

Journey time: Approx. 1 Hour

Pickup Time: 07:00AM.

Begin the day with an early breakfast before embarking on a full-day, curated excursion to the breathtaking Lake Mutanda, combining exhilarating adventures with rich cultural experiences.

Today's planned day excursion: “A Day in rural Uganda” at Lake Mutanda – Begin your day with a serene dugout canoe ride across the tranquil waters of Chameleon Bay, as morning mist lifts to reveal breathtaking lake views! On arrival, receive a warm welcome from a local farming family and step into an intimate, hands-on cultural experience. Explore their fields, harvest fresh produce such as potatoes, pumpkins, or seasonal fruits, and join the family in preparing a traditional Ugandan meal, which you will enjoy together for lunch. In the afternoon, take a guided stroll through the village to visit a local school and bustling trading center, gaining a rare insight into daily life in an authentic rural Uganda. This exclusive experience offers a meaningful connection to the land, its people, and their enduring traditions—an unforgettable highlight for discerning travelers!

In the evening, return to your lodge to freshen up before dinner and an overnight stay.

Overnight: Nkuringo Gorilla Lodge – or similar

Meal Plan: Full Board (Breakfast, Dinner, and Lunch)

YOUR Itinerary

DAY 6 –Golden Monkey Trek and transfer to Kigali City

Journey time: Approx. 04 Hours to Kigali

Pickup Time: 06:00AM.

Begin your day with an early breakfast and check-out, followed by a transfer to Mgahinga Gorilla National Park for the Golden Monkey Trek.

Planned Activity: Mgahinga Golden Monkey Trekking – Following a morning briefing, embark at 08:30AM on a captivating trek through the lush rainforest of Mgahinga National Park. Traverse a moderate trail leading to the lower bamboo zones, home to the playful and endearing golden monkeys. Spend 1–2 hours observing, photographing, and delighting in the antics of these remarkable primates in their natural habitat. For your comfort and safety, we recommend sturdy hiking shoes, long sleeves and trousers, insect repellent, drinking water, a face mask, and the option to hire a porter for your backpack. This unique wildlife encounter offers an unforgettable connection with one of Uganda's most charming species, perfect for a rewarding and exclusive adventure.

After the trek, enjoy a hot lunch before continuing to Kigali City for an overnight stay, concluding a day of remarkable primate experiences in comfort.

Overnight: The Retreat by Heaven – or similar

Meal Plan: Half Board (Dinner and Breakfast)

YOUR Itinerary

DAY 7 – Visit Kigali Genocide Memorial and transfer to Kigali Airport

Journey Time: Less 40 Minutes

Pickup Time: 08:00AM.

Begin your day with an early breakfast at the hotel, followed by a visit to the Kigali Genocide Memorial. Afterwards, enjoy lunch at a restaurant before being transferred to Kigali Airport for your onward journey.

Visit Kigali Genocide Memorial: Step into Rwanda's profound history, where a guided, reflective experience brings the nation's story of resilience, courage, and healing to life. Through powerful exhibits, personal testimonies, and carefully curated narratives, gain an intimate understanding of the past while appreciating the remarkable journey toward reconciliation. This deeply moving encounter offers a lasting connection to Rwanda's spirit and an unforgettable perspective on its people and heritage.

Meal Plan: Breakfast and Lunch

End of Safari