

08 DAYS: UGANDA ADVENTURE EXPEDITION—FLY-IN

08 Days | 07 Nights

Embark on an exhilarating eight-day Ugandan safari, where wildlife, adventure, and culture converge. Soar over the stunning landscapes on a scenic flight to Queen Elizabeth N. Park, then track elephants, antelopes, and predators on thrilling game drives, cruise the Kazinga Channel amid hippos and birds, and trek through Kyambura Gorge in search of playful chimpanzees. Witness the rare tree-climbing lions in Ishasha before venturing into Bwindi for a full-day forest trek from Buhoma to Nkuringo and an awe-inspiring encounter with mountain gorillas. Challenge yourself on a high-altitude Mount Sabyinyo trek in Mgahinga Forest and immerse in authentic Ugandan village life at Lake Mutanda through canoeing, crop harvesting, and hands-on cultural experiences.

Group Size: 06 – 12 Guests



Entry Entebbe – Queen Elizabeth National Park – Bwindi Impenetrable Forest – Mgahinga Gorilla National Park via Lake Mutanda – Exit Entebbe

Package Price: Quoted in US Dollars Based on Single Occupancy

Number of Guests	Midrange Option	Luxury Option
2	5,950 pp.	14,280 pp.

TOUR HIGHLIGHTS

- Scenic domestic flights
- The Equator and Queen's Pavilion
- Kazinga Channel boat cruise
- Privately guided Game drives
- Kyambura chimp trek
- Ishasha Tree-climbing lions
- Scenic domestic flights
- The Equator and Queen's Pavilion
- Kazinga Channel boat cruise
- Privately guided Game drives
- Kyambura chimp trek
- Ishasha Tree-climbing lions

INCLUSIONS

- 01 Gorilla and Chimpanzee tracking permit per person
- Fuel for the entire safari until departure.
- Transport in an enclosed 4WD Land Cruiser
- 02 Domestic flights based on the itinerary schedule.
- 07 Nights' accommodation plus planned meals in the itinerary
- English-speaking driver-guide
- Park entry fees and activities as planned in the itinerary.
- 02L daily mineral water per person
- AMREF Emergency evacuation cover

Excluded: All optional activities and services not mentioned above.

YOUR Itinerary

DAY 1 – Arrive and Fly to Kasese Airstrip | To Queen Elizabeth National Park

Flight Duration: Approx. 2 Hours

We recommend an early arrival at Entebbe International Airport. After completing immigration formalities, you will proceed to check-in for your domestic flight to Queen Elizabeth National Park. **Domestic flight Departure (ETD): 10:30hrs | Check-in Opens at 09:30hrs.**

Upon landing at Kasese Airstrip, you will be warmly welcomed by your dedicated Driver-Guide and transfer to Mweya Safari Lodge for lunch before the afternoon boat cruise.

Today's activities and sights: Equator Stopover at Kasese and The Queen's Pavilion: Enjoy a brief stop at the Equator for a photo opportunity where the northern and southern hemispheres meet. Continue to the historic Queen's Pavilion, built to commemorate visits by British royalty. Kazinga Channel Boat Cruise (Afternoon): In the afternoon, embark on a boat cruise along the Kazinga Channel, the natural link between Lake Edward and Lake George. The channel is home to large pods of hippos, crocodiles, elephants, and a remarkable variety of birdlife! After the boat cruise, enjoy the rest of this evening at leisure.

Overnight: Midrange: Mweya Safari Lodge – or similar

Luxury: The River Station – or similar

Meal Plan: Full Board (Lunch, Dinner, and Breakfast)

YOUR Itinerary

DAY 2 – Guided Game Drive and Chimpanzee Tracking in Kyambura Gorge

Journey time: Approx. 02 Hours

Pick-up Time: 06:00Hrs.

Start your day with an early breakfast at the lodge, fueling up for an exciting adventure ahead. Set out on a sunrise game drive when the park comes alive with wildlife. Morning Activity: Guided Morning Game Drive: Embark on a guided game drive through the park, spotting elephants, antelopes, and elusive predators. Visit crater lakes like Nyamunuka, a wildlife medicinal sanctuary, and Munyanyange, a bird haven, while your guide highlights the park's rich ecosystem and scenery. Lunch is arranged at the lodge.

Chimpanzee Tracking in Kyambura Gorge (Afternoon): Venture on a guided hike through the lush Kyambura Gorge, a 157 km² haven of forest life. Trek along winding trails in search of the Noisy Chimps, whose playful calls echo through the trees. Along the way, keep your eyes open for hippos wallowing in streams, elusive forest elephants, forest hogs, and herds of graceful antelopes. This thrilling encounter combines adventure, wildlife spotting, and the serene beauty of the gorge's rich ecosystem.

Overnight: Midrange: Mweya Safari Lodge – or similar

Luxury: The River Station – or similar

Meal Plan: Full Board (Breakfast, Lunch, and Dinner)

YOUR Itinerary

DAY 3- Transfer to Bwindi Impenetrable Forest via Ishasha Sector

Journey time: Approx. 04 Hours

Pickup Time: 06:30AM.

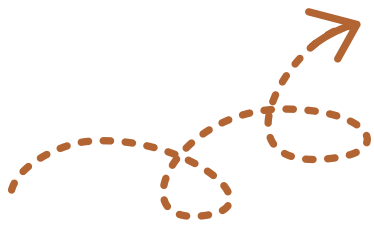
Rise early for breakfast and check-out, then set off on an exciting morning game drive, where vibrant birdlife and roaming wildlife greet you against the backdrop of Nyamunuka and Munyanyange crater lakes. Journey onward to the Ishasha Sector in search of the legendary tree-climbing lions.

After a satisfying lunch at Ishasha Jungle Lodge (subject to change), continue your adventure through scenic landscapes to the Bwindi Impenetrable Forest. Upon arrival, check in at your lodge to stay at leisure.

Overnight: Midrange: Mahogany Springs – or similar

Luxury: Gorilla Forest Lodge – or similar

Meal Plan: Full Board (Dinner, Breakfast and Lunchbox)



YOUR Itinerary

DAY 4 –Trek Through Bwindi: Buhoma to Nkuringo Forest Expedition

Walk Duration: Approx. 7 Hours

Pick-up Time: 07:30AM.

Start your day with an early breakfast, then receive lunchboxes and mineral water to carry in your backpack and off to the park for briefing.

Today's main activity: Today, set off on an extraordinary trek through the heart of Bwindi Impenetrable Forest, journeying from the northern Buhoma Sector to the southern Nkuringo Sector along the scenic Ivy or Kashasha trails. Feel the forest come alive around you—hear the calls of hidden primates, spot colorful birds flitting through the canopy, and navigate winding trails amid moss-draped trees and misty hills. This off-the-beaten-path adventure immerses you fully in nature, offering both challenge and wonder as you trek for up to 7 hours at a brisk, invigorating pace.

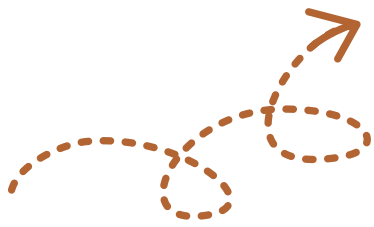
Arrive at Nkuringo, meet your driver-guide, and continue to the lodge for dinner and overnight stay after a day of exploration.

Overnight: Midrange: Four Gorillas Lodge – or similar

Luxury: Nkuringo Gorilla Lodge – or similar

Meal Plan: Full Board (Dinner, Breakfast and Lunchbox)





YOUR Itinerary

DAY 5 – Gorilla Tracking Experience with Leisurely Evening

Pickup Time: 06:30AM.

After an early breakfast, you will receive a lunchbox and bottled water to carry in your backpack, after which you will proceed to the park office.

Planned activity: Bwindi Gorilla Tracking Experience – Venture deep into the heart of Bwindi Impenetrable Forest for an unforgettable encounter with the endangered mountain gorillas. Accompanied by an experienced ranger and skilled trackers, you will navigate lush, mist-shrouded trails, surrounded by the sounds and scents of the jungle, as anticipation builds with every step. Upon finding the gorillas, spend 1 to 2 magical hours observing and photographing these majestic creatures in their natural habitat. This is more than a trek—it is an intimate, once-in-a-lifetime adventure into one of the world's most extraordinary ecosystems! During the trek, your guide will select a serene spot for a picnic lunch before you continue or return to the lodge (subject to change). For your comfort and safety, wear sturdy hiking shoes, long trousers, long-sleeved shirts, gloves, a face mask, and carry insect repellent and water.

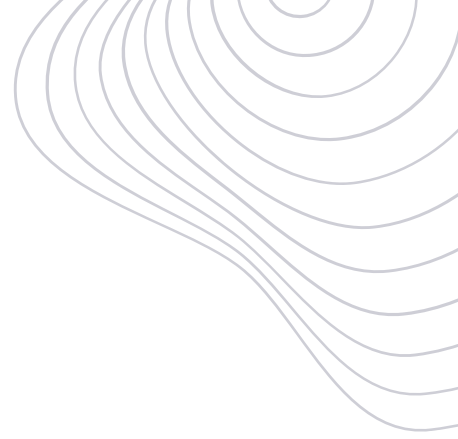
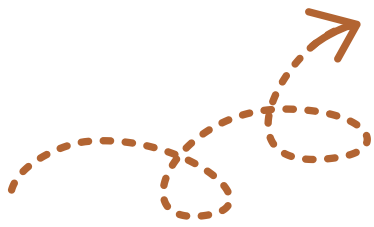
The rest of this evening will be yours at leisure to relax and unwind.

Overnight: Midrange: Four Gorillas Lodge – or similar

Luxury: Nkuringo Gorilla Lodge – or similar

Meal Plan: Full Board (Breakfast, Lunch and Dinner)





YOUR Itinerary

DAY 6 –Three Countries, One Peak | Mount Sabyinyo Guided Hike!

Pickup Time: 07:00AM.

Begin your day with a hearty breakfast at the lodge, then collect your packed lunch and mineral water for the adventure ahead. Your driver-guide will transfer you to the Mgahinga Gorilla National Park headquarters for a pre-trek briefing.

Planned Activity: Mount Sabyinyo Adventure Trek –Embark on a thrilling trek to the tripoint where Uganda, Rwanda, and DR Congo meet! Known as “Sabyinyo” for its jagged peaks that resemble an old man’s teeth, this trek is steeper and more challenging than other hikes in Mgahinga, but the panoramic views are simply breathtaking. Along the way, traverse dense forests, bamboo zones, and rugged terrain, keeping an eye out for playful golden monkeys, shy duikers, elusive mountain elephants, buffaloes, and a kaleidoscope of birds. Every step of this high-altitude adventure immerses you in the raw beauty and vibrant wildlife of this iconic volcanic landscape. Prepare with sturdy hiking boots, gaiters, trousers, a raincoat, water, packed lunch, and insect repellent. Porters are available if needed.

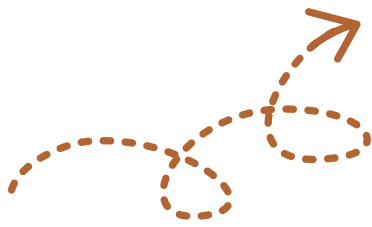
Descend and head to the lodge in the evening for dinner and overnight stay.

Overnight: Midrange: Lake Mulehe Gorilla Lodge – or similar

Luxury: Mount Gahinga Lodge – or similar

Meal Plan: Half Board (Dinner and Breakfast)





YOUR Itinerary

DAY 7 – Lake Mutanda: Experience “A Day in Rural Uganda”

Journey time: Approx. 1 Hour

Pickup Time: 08:00Hrs.

Enjoy an early breakfast before heading to the stunning Lake Mutanda for a full-day excursion filled with adventure and cultural experiences.

Today's planned excursion: Immerse yourself in the charm of rural Uganda with this authentic cultural and culinary experience. Begin with a peaceful dugout canoe ride across Chameleon Bay, gliding over the calm waters as the mist lifts from the lake. On arrival, be warmly welcomed by a local farmer and his family. Explore their fields, harvest fresh produce like potatoes, pumpkins, or seasonal fruits, and step into the homestead kitchen to help prepare a traditional Ugandan meal, which you will share together for lunch. In the afternoon, stroll through the village to visit a local school, and trading center.

Overnight: Midrange: Lake Mulehe Gorilla Lodge – or similar

Luxury: Mount Gahinga Lodge – or similar

Meal Plan: Full Board (Breakfast, Dinner, and Lunchbox on departure)



YOUR Itinerary

DAY 8 – Farewell Journey: Flight from Kisoro to Entebbe for Departure

Flight Duration: Approx. 2 Hours

Pickup Time: 06:30Hrs.

Start your day with an early breakfast at the lodge and receive a packed lunch for your journey. You will then transfer to Kisoro Airstrip for your flight to Entebbe Airport – upon arrival, proceed to check-in for your outbound flight. For guests with late departures, dayroom access until 18:00Hrs can be arranged at for an additional fee.

Meal Plan: Breakfast | Lunchbox at check-out

End of Safari