

09DAYS: NORTHERN NAMIBIA EXPEDITION

09 Days | 08 Nights

This 9-day Namibia safari and cultural tour offers an immersive experience of the country's diverse landscapes, rich wildlife, and vibrant indigenous cultures. Guests begin with a welcome and orientation in Windhoek, followed by visits to renowned national parks including Etosha, where extensive game drives reveal abundant wildlife across varied ecosystems. The journey also includes culturally enriching encounters with the Ovambo and Himba communities, providing authentic insights into their traditions and lifestyles. Scenic stops such as Ruacana Waterfalls and the Waterberg Plateau add to the natural splendor of the itinerary. The tour concludes with a return to Windhoek and transfer to the airport, leaving guests with lasting memories of Namibia's unique heritage and natural beauty.

01 – 06 Guests



Windhoek – Etosha South & Etosha East – Ovamboland – Opuwo – Waterberg Plateau N. Park – Windhoek

Price Quoted in USD (Per Person sharing)

People	Price
2 pax	5,985 pp

TOUR HIGHLIGHTS

- Windhoek city tour
- Okahandja Open Market visit
- Game drives in Etosha South & East
- Ongula Village cultural experience
- Ruacana Waterfalls visit
- Himba cultural village visit
- Waterberg Plateau exploration |relaxation
- Explore Opuwo – Namibia
- Bird watching on safari
- Stunning Scenic Views

INCLUSIONS

- All transportation
- Accommodation as specified
- Park entrance fees
- Meals as indicated in the itinerary
- Scheduled activities
- Passenger liability insurance.

Excluded: All optional activities and services not mentioned above.

YOUR Itinerary

DAY 1- Arrival in Namibia: Windhoek City Tour!

Upon arrival in Windhoek, you will be warmly welcomed by our professional guide. Before departing for your accommodation at Weinberg Windhoek, you will receive your tour documents and have a briefing to prepare you for the journey ahead.

After check-in, set off on a Guided Windhoek City Tour, offering insights into the capital's history, architecture, and cultural landmarks. In the evening, unwind with a delightful dinner at the iconic Joe's Beerhouse (**meal priced at N\$400**); known for its vibrant atmosphere and authentic Namibian cuisine.

Overnight: The Weinberg Hotel Windhoek – or similar
Meal Plan: Bed and Breakfast

DAY 2 – Journey to Etosha South National Park

Early breakfast and departure to the renowned Etosha National Park (South), one of Africa's premier wildlife destinations. Along the way, we will make a brief stop at the Okahandja Open Market, a vibrant cultural hub where local artisans display a variety of handcrafted wood carvings, souvenirs, and traditional crafts.

Upon arrival at Etosha, you will check into your lodge to refresh and go for an evening game drive within the park. As the sun sets and temperatures cool, wildlife becomes more active—this is an ideal time to spot predators on the move, as well as nocturnal species.

Return to your lodge for a restful night surrounded by the sounds of the African wilderness.

Overnight: Okaukuejo Resort – or similar
Meal Plan: Half Board

YOUR Itinerary

DAY 3-

Full-day Exploration of Etosha East National Park

Early breakfast at your lodge. Today is dedicated entirely to a full-day game drive in the eastern region of Etosha National Park, a wildlife-rich area renowned for its expansive salt pan, open grasslands, and prolific animal sightings – Accompanied by your safari guide.

Throughout the day, explore a variety of waterholes and ecological zones that attract a wide range of species—including elephants, giraffes, lions, rhinos, zebras, wildebeest, and an abundance of birdlife. Your guide will share fascinating insights into animal behavior, tracking techniques, and the park's unique ecosystems as you traverse the diverse terrain in search of memorable wildlife encounters. A packed lunch will be enjoyed at a scenic picnic site within the park. Later return to your lodge and spend the evening at leisure.

Overnight: Etosha King Nehale Lodge – or similar

Meal Plan: Half Board

DAY 4-

Immersive Cultural Tour of Ongula Village

Today, you depart for Ongula Village to immerse yourself in the rich cultural heritage of the Ovambo people. During this visit, you will experience authentic Ovambo traditions, including traditional dances, crafts, and local customs, guided by knowledgeable community members who will share stories and insights about their way of life. This unique cultural encounter offers a rare opportunity to connect with the community, learn about their history, and witness daily village life up-close.

After a fulfilling day of cultural exploration, you will transfer to your lodge where the evening is yours to relax and enjoy at your leisure.

Overnight: Ongula Village Homestead Lodge – or similar


Meal Plan: Half Board



YOUR Itinerary

DAY 5-

Journey to Opuwo via Rucana Waterfall



We begin the day early with breakfast before embarking on a scenic drive to Opuwo, the vibrant administrative town of the Kunene region. Along the way, you will experience the changing landscapes and have opportunities to observe rural life in northern Namibia.

You will make a stopover to visit the spectacular Ruacana Waterfalls, one of Namibia's most impressive natural attractions. Here, you can enjoy the stunning views, explore the surrounding area and capture memorable photographs of the cascading waters.

After this refreshing stop, we continue to Opuwo where the evening is yours to relax at leisure

Overnight: Opuwo Country Lodge – or similar

Meal Plan: Half Board

YOUR Itinerary

DAY 6–

Full-Day: Himba Cultural Experience

Today begins with the promise of discovery as we set out on a full-day Himba excursion. Venturing into the heart of the Himba homeland, guests will be welcomed into traditional villages, where time-honored customs are still preserved in their purest form. The day offers a rare opportunity to engage with community members, learn about their intricate hairstyles and symbolic attire, and hear stories passed down through generations.

The Himba are one of Namibia's last tribes striving to preserve their ancient customs in the modern world. Known for their distinctive appearance—each element reflecting practicality, age, or status—they offer visitors a fascinating insight into their daily life. Interactions are often mutual, with guests also answering questions, fostering a deeper cultural exchange.

As the sun dips low, we return to the lodge, where the warmth of the evening awaits. The day concludes with a sumptuous dinner at the lodge, a perfect moment to reflect on the richness of the experiences shared.

Overnight: Opuwo Country Lodge – or similar
Meal Plan: Half Board

YOUR Itinerary

DAY 7-

Journey to Waterberg Plateau National Park

After a sumptuous breakfast, you will embark on a scenic journey to the majestic Waterberg Plateau, a striking sandstone formation rising dramatically from the surrounding plains. Along the way, enjoy the changing landscapes and keep an eye out for local wildlife that inhabits this unique ecosystem.

Upon arrival, the afternoon is yours to relax and soak in the tranquil atmosphere, accompanied by the soothing sounds of native birds calling through the trees. As the sun sets, the lodge comes alive with the warm glow of evening light, offering a perfect setting for a leisurely dinner.

Overnight: Waterberg Plateau Lodge – or similar
Meal Plan: Half Board

DAY 8-

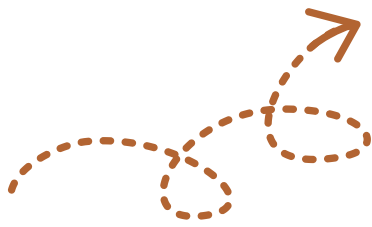
Journey back to Windhoek – Namibia

After breakfast you will embark on a scenic drive to Windhoek, Namibia's vibrant capital city. Upon arrival, check in to your hotel to relax and unwind at your leisure.

The rest of the afternoon is yours to spend at leisure—whether you choose to relax by the pool, explore local shops, or simply enjoy the atmosphere of the city at your own pace.

In the evening, indulge in a delightful dinner at the renowned Cape Town Fish Market, where a variety of flavorful dishes await you—The meal is priced at N\$450 per person.

Overnight: The Weinberg Hotel Windhoek – or similar
Meal Plan: Bed and Breakfast



YOUR Itinerary

DAY 9-

Transfer to Hosea Kutako International Airport (WDH)



After breakfast, you will be transferred to Hosea Kutako International Airport for your departure flight. We trust you had a memorable and enjoyable tour, and we wish you a safe and pleasant journey home.

Meal Plan: Breakfast only

End of Safari

