

ULTIMATE KENYA-TANZANIA SAFARI

9 Days / 8 Nights

The Kenya and Tanzania Safaris feature a unique adventurous exclusivity of the Great Migration, known as the “Greatest Wildlife Show on Earth”. This stunning annual natural event (Great Wildebeest Migration) is a movement of approx. 1.5 million wildebeest and zebra across the Ngorongoro, Serengeti and Masai Mara ecosystem. The Great Migration will highlight your adventure alongside Masai Mara’s Hot-air Balloon Safari; the program is tailored to offer opportunities for magnificent Game viewing, Cultural immersions, Bush Dinning (Sundowners and Bush feasts) and to explore culture/history/nature-based landmarks. Explore Serengeti’s Ndotu Plains: main calving ground contributing to the Great Migration; where Zebras, wildebeests and more are born, keeping the magical migration solid. This happens to be a safari of a lifetime!



Nairobi – Amboseli National Park – Ngorongoro Crater – Serengeti National Park – Masai Mara National Reserve – Nairobi

Package Price: Quoted in US Dollars Based on Single Occupancy

Number of Guests	All Inclusive Package
TBC	Request Quote

TOUR HIGHLIGHTS

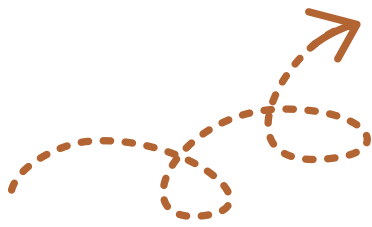
- The Great Wildebeest Migration
- Explore Amboseli National Park
- Tour Olduvai Gorge and Museum
- Ngorongoro Crater experience
- The Serengeti–Masai Mara game experience
- Mara Hot-air Balloon Safari
- Sundowners and Bush Dinning
- Guided Game Drives and Nature walks
- Stunning Scenery and Sunrise/set
- Stunning views of Mount Kilimanjaro
- History and Cultural Encounters
- Birding opportunities

INCLUSIONS

- An English–speaking Driver Guide
- Fuel for the entire safari/trip until departure
- Transport in a stretch 4X4 Land Cruiser (Window seat guaranteed)
- Return airport transfers per program
- Meals as described in the itinerary
- Dinner on departure
- A few snacks provided on road trips
- 09 Nights' Accommodation
- All park entrance fees per park visited
- Guided game drives as planned in the itinerary
- Masai Mara sundowner and Masai cultural tour
- 02L Daily Mineral water per person on safari/tour
- AMREF Medical evacuation cover

All Government Taxes

Excluded: All optional activities and services not mentioned above.



YOUR Itinerary

DAY 1 – Arrival in Nairobi and transfer to the Hotel

Journey Time: Less 30 Minutes

Upon arrival at Jomo Kenyatta Int. Airport, be welcomed by our safari guide(s) and then transfer to the hotel in Nairobi. Arrive and check-in to spend the rest of this day/night at leisure – Best time to recuperate and to prepare for a memorable adventure ahead.

Dinner at included based on arrival time.

Overnight: Radisson Blu Hotel & Residence – or similar

Meal Plan: Bed and Breakfast



YOUR Itinerary

DAY 2 – Depart Nairobi City to Amboseli National Park

Journey Time: Approx. 4 Hours

Pick-up Time: 07:00AM.

Breakfast at your Hotel in Nairobi and Check-out. As scheduled, depart Nairobi to Amboseli National Park: Arrive for lunch and refreshment at the lodge upon checking-in. Thereafter, be at leisure with a later game drive.

Amboseli National Park – Dominated by an iconic view of Mount Kilimanjaro, Africa's highest mountain (in the vicinity), Amboseli is one of Kenya's oldest and most popular national parks. Endlessly panoramic and yet comparatively compact, the park is dotted with emerald-green swamps in which great herds of elephant wallow, half-submerged in the papyrus grasses. In the late afternoon, go for a guided game drive, aimed at introducing you to the lush savannah wetlands of Amboseli's fascinating landscape. Enjoy your cool evening at the lodge after exploring the highlights of Amboseli National Park at sunset! Dinner included.

Overnight: Elewana Tortilis Camp – or similar

Meal Plan: Full Board

YOUR Itinerary

DAY 3 – Sunrise Safari in Amboseli with a Cultural Experience

Pick-up Time: 06:30AM. Breakfast, lunch and dinner at the lodge.

Go for a Guided Game Drive at sunrise – Amboseli National Park in southern Kenya, is known for its large elephant herds and immense views of Mount Kilimanjaro, across the border in Tanzania. Getting to the Observation Hill will reward you with panoramic views of the Kilimanjaro peak, park's savannah plains and swamps; as well as numerous wildlife – giraffes, zebras, cheetahs and hundreds of birds. Enjoy a wilderness safari in Amboseli: The Park is nicknamed the "Land of the Giants", due to an immense elephant population, inhabiting the breath-taking vistas of Mt Kilimanjaro – thus an awesome backdrop of the park. At Amboseli be assured of the four of the Big Five! Rhinos are absent, but huge herds of elephants reliably move to and from the marshy swamps in the centre of the park. Buffalo, wildebeest, Burchell's zebra and gazelle are a common sight. Lions are the easiest to spot of the big cats, but sightings are hit-and-miss. Included is the Amboseli Masai Cultural Village with a Sundowner and Bonfire at the lodge. Dinner will be served at the lodge after the day's explorations.

Overnight: Elewana Tortilis Camp – or similar

Meal Plan: Full Board

YOUR Itinerary

DAY 4 – Travel further to Ngorongoro via Namanga (Kenya-Tanzania Boarder)

Journey Time: Approx. 5 Hours

Pick-up Time: 06:00AM.

Early breakfast at the lodge and check-out: then board and depart Amboseli to Tanzania' Ngorongoro Conservation Area.

Stopping-over at Namanga Boarder Post will be for immigration procedures in order to be granted entrance into Tanzania; from Namanga continue to Ngorongoro – arriving for a picnic lunch within the Crater-floor – a once in lifetime experience!

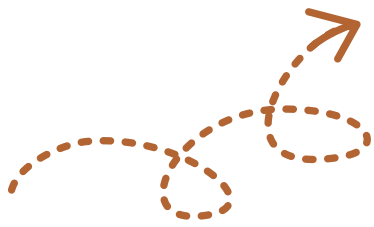
After lunch explore the highlights of Ngorongoro (Game Drives and Nature walks) Explore the stunning Ngorongoro Crater; a renown world's largest and most scenic volcanic crater! Ngorongoro is an utterly unique biosphere that has remained virtually untouched since the dawn of time. Deep within the crater, enclosed by towering walls, some over 20,000 large mammals roam in the plains, lakes, and forests of this land that time forgot, dominated by enormous bull elephants, rhinos, lions, and birds of all kind.

Visit the world-famous Olduvai Gorge and Olduvai Museum; a pre-historic archaeological site where the ancient fossils of the early man were discovered thus crowned the "Cradle of Mankind". You will get to learn about; the discovery works of Mary and Louis Leakey (over 30 years), highlighted by historic excavations of the first fossils and artefacts of the early man. Continue to Olduvai Museum; the Museum exhibits numerous fossils, stone tools of our hominid ancestors and skeletons of many extinct animals excavated in the gorge. It was founded by Mary Leakey in 1970 and later redeveloped to its present look in 2017.

Safari in Ndutu Plains; situated on the outskirts of the Southern Serengeti plains – the plains are enriched with tremendous acacia trees, providing a panoramic view across Lake Ndutu and Masek. Reaching Ndutu means being in a calving ground for migratory animals, specifically the wildebeest; it is composed of vast savannah grasslands, soda-lake Masek, marshes, and woodland vegetation which offers a conducive atmosphere for calving. Thousands of calves are born here every calving season, making Ndutu a home for new creatures on Earth. Giraffe, impala, elephant, dik dik, lion, cheetah, leopard, hyena, bat-eared fox, genet, jackal, wildcat, and many other animals call Ndutu home. From Ndutu Plains, transfer to the lodge to check-in and refresh for dinner.

Overnight: The Retreat at Ngorongoro – or similar

Meal Plan: Full Board



YOUR Itinerary

DAY 5 – Dawn Game Drive en-route to Serengeti National Park

Journey Time: Approx. 2 Hours to Serengeti

Pick-up Time: 06:30AM.

Dawn Game Drive en-route to Serengeti National Park

Journey Time: Approx. 2 Hours to Serengeti

Pick-up Time: 06:30AM. Early refreshment at the lodge and check-out; be offered a quick cup of tea/coffee and depart. Start with a game drive in Ngorongoro – which makes for a huge opportunity to spot the lions, leopards, cheetahs amidst stunning views at sunrise.

Pause the safari at your Bush Breakfast Spot: Arrive and make yourself comfortable around set tables, for breakfast to be served breakfast in the wilderness at sunrise. The scenic spot is setup with tables, camping chairs, campfire, a live “bush kitchen” with a professional chef and his team. Be welcomed with a glass of chilled sparkling wine or fresh-pressed orange juice: Then to a delicious full English breakfast; the chef will offer a choice of sausage, bacon, eggs, tomatoes and toast as you sock-in some vitamins from the morning sun. Thereafter, your game drive continues on the way to Serengeti National Park. Arrive at Serengeti and proceed to the lodge to check-in for lunch and refreshment.

In the evening head out for a guided game drive at sunset. Diner at the lodge.

Overnight: Serengeti Semetu Camp – or similar

Meal Plan: Full Board



YOUR Itinerary

DAY 6 – Explore Serengeti National Park with Masai Cultural Experience

Pickup Time: 06:30AM. Early breakfast at the lodge and go for an epic guided game drive in the legendary Serengeti National Park (detailed safari experience).

Safari in Serengeti National Park (UNESCO World Heritage Site) – The word “Serengeti” was derived from the Masai language, meaning “endless plains”. Serengeti remains outstanding due its beauty and being a home to the Great Wildebeest Migration: The huge herds of plains game such as wildebeest, zebra and antelope dominate the park whereas the attendant predators such as lion and cheetah are often overseeing the plains from the many kopjes scattered across. The park’s savannah-wood-landscape is composed of open grass plains, savannah with scattered acacia trees, hilly, wooded grassland as well as, extensive woodland and black clay plains. Serengeti is also renowned for vast wildlife populations: a record 2 million+ ungulates, 4000 lions, 1000 leopards, 550 cheetahs and over 500 bird species, inhabiting a close to 15,000sq.km area – a great opportunity to witness an iconic Great Migration on your safari adventure!

A few snacks and soft drinks will be provided during your game drive. Lunch and refreshment at the lodge following a successful morning safari.

Late afternoon – Go for the Masai Cultural Visit: The Masai are a dominant nomadic warrior tribe residing within the Serengeti, and still live largely untouched by modernity. The Maasai live in traditional “Manyattas”; low height huts, made of mud, cow dung and wood, with a single entrance and minimal side windows – these are clustered forming a homestead/village “Masai Boma”, without modern facilities (power, piped water and more) Enjoy a cultural immersion on your visit to a Maasai village; interact with the Maasai and get to explore their unique culture and traditional lifestyle (customs and practices).

Return to the lodge late evening to refresh for dinner at leisure.

Overnight: Serengeti Semetu Camp – or similar

Meal Plan: Full Board

YOUR Itinerary

DAY 7 – Journey to Masai Mara via Isebania (Kenya-Tanzania Border)

Journey Time: Approx. 5 Hours

Pickup time: 06:30AM.

Early breakfast at the lodge and check-out: Thereafter, join your Safari Guide and travel to Masai Mara National Reserve across Isebania Border. Get to Isebania Immigration Office to follow immigration formalities; and continue with your journey to Masai Mara. Proceed to the lodge and check-in for lunch.

Late afternoon – Go for a Guided Game Drive in Masai Mara with a sundowner.

Mara Sundowner experience: The “Sundowner” is an essential part of an adventure safari, dating back to the 1920’s colonial hunting safaris, where cocktails would be served as the sun began its descent down the horizon. Upon arrival at your sundowner site into the golden hour; you will be amazed by picturesque panoramic views, in a setting equipped with a blazing campfire, safari bar, a hot canapé-counter, camper seats, lanterns and Maasai warriors – high above ground on a Lookout Hill. Enjoy some snacks and cocktails as you gaze at the stunning wilderness sunset.

Return to the lodge late evening. Check-in and refresh to enjoy your dinner.

Overnight: Mara Serena Safari Lodge – or similar

Meal Plan: Full Board

YOUR Itinerary

DAY 8 – Masai Mara Hot Air Balloon Safari (Bush Breakfast) and Game Drives

Pickup Time: 04:00AM.

Depart the lodge very early to the Balloon launch site. Arrive by 06:00AM: As you wait and witness how the balloon(s) are prepared for take-off; be offered a cup of coffee/tea to charge for the adventure! Then gather around for a word from your balloon pilot, about the necessary safety guidelines as well as explaining your potential expectations during your balloon ride.

Thereafter, embark onto the balloon basket to catch the morning's golden hour (sunrise). A safari of this nature offers unique aerial views of the Masai Mara which is impossible to replicate from the ground below. This whole experience is worth the cost; it is composed of breath-taking vistas, wildlife sightings, and a golden sunrise to leave you hypnotized! Furthermore, it is an ideal setting for stunning photography facilitated by a natural morning light and a picture-perfect scenery, well blended with wildlife. Enjoy your adventure balloon ride across the popular Masai Mara – a flight that lasts an hour to land between 7:30AM/7:45AM.

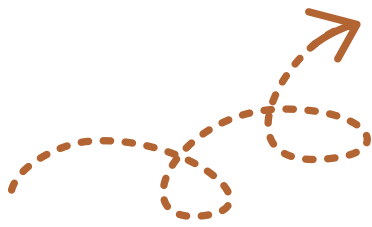
Upon landing, proceed to a set venue for your Bush Breakfast: Savour a delicious breakfast amidst sights and sounds of a real African bush. A well-thought selection of freshly baked pastries, eggs/omelettes, exotic fruits, and numerous hot dishes awaits. This comes with teas/coffees, a glass of champagne and/or fresh juices.

Continue with a game drive to explore the attractions that have just been viewed from the sky. Feel the magic of 7th natural wonder of the world – a spectacular sight of an immense "Big-Five" (Lion, Rhino, Buffaloes, Cheater and Elephant) and the wildebeest migration from the Serengeti into Masai Mara. The expertise of our safari guides will maximize your chances of seeing all the splendours of Masai Mara and beyond.

Returning to the lodge will be for lunch; with the rest of this afternoon at leisure – free time for personal engagements. Dinner included.

Overnight: Mara Serena Safari Lodge – or similar

Meal Plan: Full Board



YOUR Itinerary

DAY 9 – Domestic flight to Nairobi via Wilson Airport + onward Departure

Flight Duration: 1 – 2 Hours

Pickup Time Options: 06:30AM/09:00AM/01:00PM (to be confirmed).

Today's inbound travel is based on your outbound flight schedule. Breakfast will be served at the lodge on a leisurely morning (lunch to be offered based on flight schedule).

At a pick-up time based on onward travel plans – Be dropped off at either Keekorok, Serena or Angama Airstrip for your internal flight to Nairobi's Wilson Airport. Upon landing, be transferred to the hotel briefly to refresh and/or head straight to J.K.I. Airport to check-in for a flight departing Kenya. Dinner will be offered in case your flight is much later in the night.

Accommodation: Radisson Blu Hotel &
Residence (Dayroom(s) only)

Meal Plan: Breakfast, Lunch and/or Dinner

End of Safari

